

Mickleover Primary School
Child Friendly

Relationships & Behaviour Policy

Reviewed by the School Council

(Updated September 2025)



Our School: What we want it to be like.

Our school is special. It is a happy school where respect is very important. It is a school where we celebrate that we are all different and are proud of our differences. We want everyone to behave in a friendly and respectful way with no bullying. Everyone at our school is equal and should be treated equally. This doesn't mean that we treat everybody the same.

Why we need to have this policy and why it is important to us.

A policy helps everyone to know what we expect at Mickleover Primary School. It is important that the children help with the policy because we are part of the school family and everyone in the school family needs to understand how the school is run.

How we should behave and why?

We should behave in a respectful and appropriate way. This means we should be friendly and kind to everyone. We should have pride in our learning and follow the **school rules which we call 'Ready, Respectful and Safe'**. We should try hard to make the right choices and always do our best to respect each other, their views and opinions, our property, ourselves and our learning environment.

If we are Ready, Respectful and Safe then we will all learn and achieve our targets. It will also make our school a friendly place to be, where people want to come to learn.

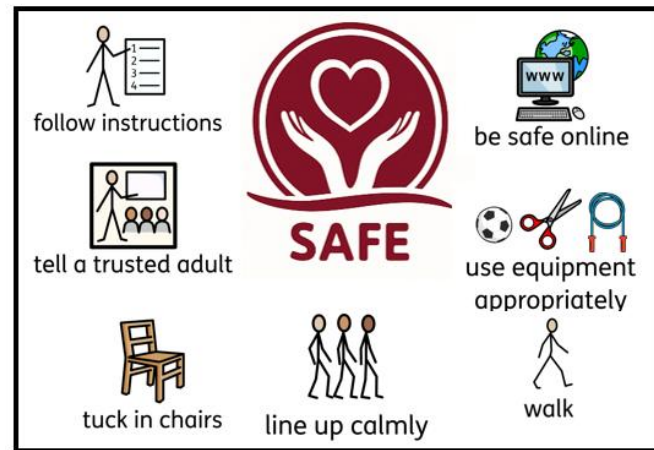
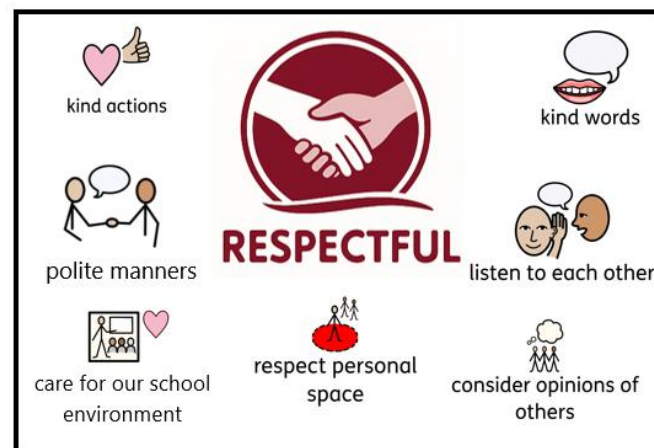
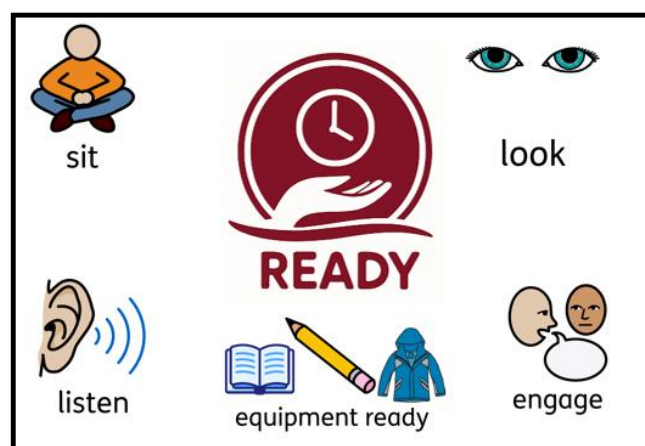
MICKLEOVER PRIMARY SCHOOL - OUR RULES

'Be Ready, Be Respectful and Be Safe'

EYFS and Year 1



Year 2 - Year 6



What happens if we behave appropriately?

We get rewards like

- verbal praise
- 'well done' stickers
- we get to show our work to other teachers
- a certificate
- Chosen as Outstanding Team Member
- Bronze, Silver, Gold or VIP awards
- a photo in our school photo album at the front of school
- our teachers share the good things we do with our parents

In the Infants, children are rewarded with Class Dojos. In the Juniors, children are rewarded with house team points.

Some classes may have whole class rewards. These can earn us extra play time or fun free choice activities.

Every class is different, but we all get rewarded if we make the right choices.

Everyone in our school who is chosen as an outstanding team member gets their name put in our termly raffle to win a £10 book token.

What happens if we don't behave appropriately?

Firstly, we get a verbal warning and we are reminded how we should behave.

Then if the inappropriate behaviour carries on we get put on the Green Traffic Light. This is a formal warning.

If the behaviour carries on we get put on the Orange Traffic Light. This means we miss 15 minutes of our break time. We have to go and see Mrs Gerver, our Headteacher or Mr Welsh/ Mrs Halliday, our Assistant Headteachers, to explain which School Promise has been broken. A Class Dojo message is sent home to parents to explain which school promise was broken.

If we still don't follow our School Promises we get a red card. This means we miss a playtime and work in the Head teacher's office for a set period of time. We have to go and see Mrs Gerver to explain which School Promise has been broken. Our teacher also phones or Class Dojos our parents.

If we get more than one red card in a week, we might get placed on a behaviour report for a week. This means we will have time to talk to the head teacher /

assistant heads about our behaviour and what we can do together to change it. This doesn't happen very often.

Is our behaviour system for all the time?

We should try to behave well all the time, wherever we are. During the school day, this means at playtimes and lunchtimes too. At lunchtime, the midday supervisors and kitchen staff will reward our good behaviour with 'thumbs up' stickers. If we make the wrong choices at lunchtime, the midday supervisors will follow the card system (see below)

LUNCHTIMES

If you are not following our school rules 'Ready, Respectful, Safe' at lunchtime you will be given a verbal warning.

If in the same lunchtime, your inappropriate behaviour continues you will be given a yellow card. You will speak with the Play Lead (Ms Umar). The Play Lead will talk to you about the behaviour you displayed and help you to understand why your behaviour was wrong.

If in the same lunchtime, you still don't follow the school rules 'Ready, Respectful, Safe' a Red Card will be given by the Play Lead. **You will miss 15 minutes of your lunchtime.**

At the end of lunchtime, the Play Lead will tell your teacher if you have been given a red card. The red card will be either stapled into the home-school diary or a Class Dojo will be sent to parents by the teacher.

If you have used inappropriate language or hurt another child, you may be placed on a Red card by the Play Lead, without a warning.

Each day, you will start the next lunchtime afresh.

How we will know if our policy is working?

We will have well behaved children and a happy school.

Who has been involved in writing this policy and when will we write it again?

Everyone in Mickleover Primary School helped to write the Relationships & Behaviour policy.

This child friendly version was written by our School Council.

The policy will need to be looked at again during the next school year or before then if we feel things need changing.

